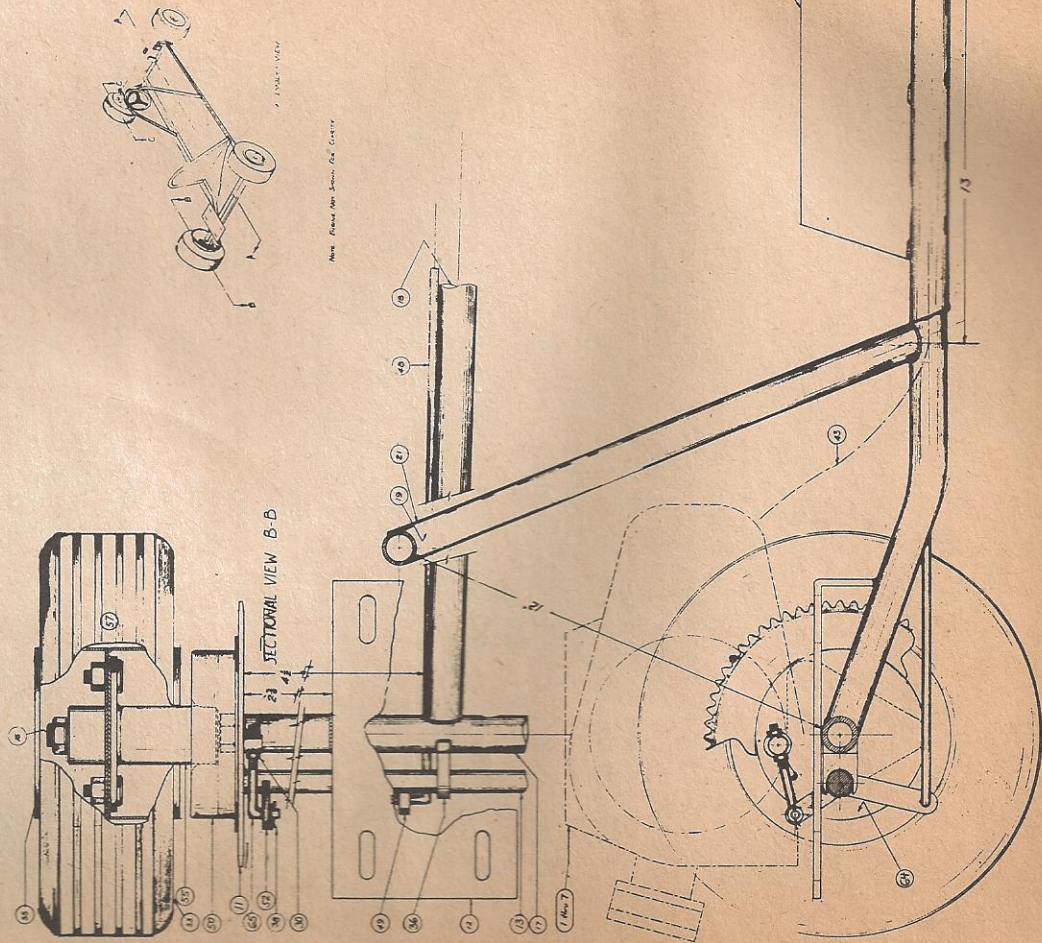


GO KART MANUFACTURING COMPANY'S BLUE PRINT

single part in the 1960 Go Kart kit has been tested in competition and in general use, and that three years of research and development have gone into the job to provide the best possible equipment. Spencer also sent us a special experimental blue print of the new Go Kart with sectional views. This is the kind of print from which the

Bill Matthews incorporates the same frame on all his karts, which



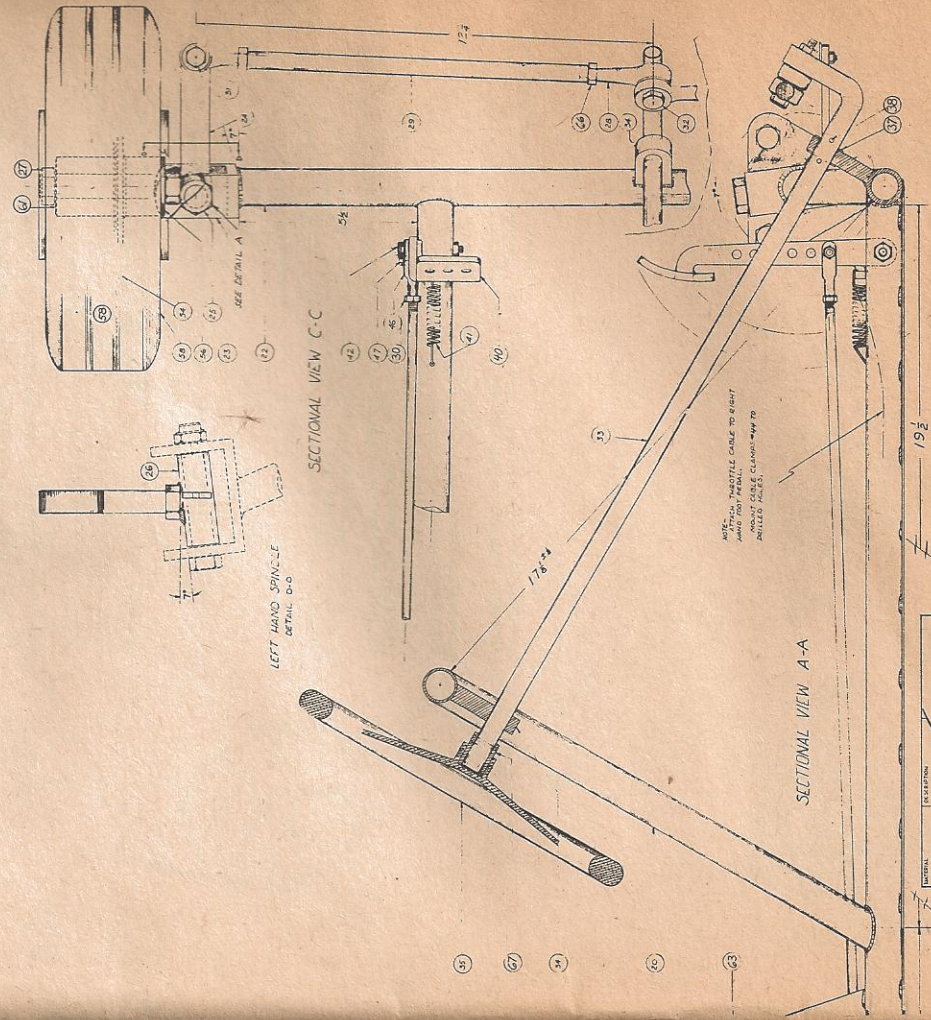
means that if you start by buying a single engine kit, you can later convert to a twin, using the same frame.

The Matthews Company's latest is the MARK 500 special powered by Dual West Bend 700 or Power Prod 81's. Tires are 350 x 5 slicks (rear) and 300 x 5 slicks 9 Front). The Matthews Mark 500 has Garbro Aluminum racing wheels, ND precision bearings, quick change

sprockets, Mercury or Comet clutches. Brakes have been specially designed. Equipment includes deluxe upholstery, chrome bumpers, foot peddles, steering wheel and rod, and engine shrouds; altogether a sharp job.

Price is \$425. For an extra \$50 you can have a competition live axle.

At the moment Bill Matthews is offering three complete karts, and
(Continued on page 18)



SEE DISCOURSE		MANUFACTURING COMPANY, INC. ATUWA, CALIFORNIA	TYPE OF ENGINE	TYPE OF PART	PART NO.	WT.	SCALE	DRAWING NO.
DRAWN BY CHECKED BY DATE								